



**Traffic Tested®**

# America's Alfalfa Traffic Tested® Variety Exceeds Yield Expectations Under Manure

“We sowed the AmeriStand 403T in the fall of 2005 because of its performance under high traffic. We got four cuttings and the yield was higher than expected – even though we were experimenting with spreading up to 40 tons of manure per acre on it,” says Jeff Jorgenson, general manager of Herd Co Feedlot and Farm in Bartlett, Nebraska.

The ability to spread manure is critical to the feedlot operation which generates about 1200 tons per day, Jorgenson explains. They now have

“We sowed the AmeriStand 403T in the fall of 2005 because of its performance under high traffic.”

planted Traffic-Tested alfalfa on 400 of the 16,000-acre farm because of the high traffic of heavy equipment on their fields.

“We were surprised with the survival of the stand and the robustness of how it comes back,” continues Jorgenson. “We haven’t sacrificed anything due to applying manure. In fact, the AmeriStand 403T worked so good that we sowed another circle to AmeriStand 405T RR, a new Roundup Ready® variety. This should perform even better for us next year.”

America's Alfalfa Roundup Ready® varieties give alfalfa growers the Traffic Tested® advantages of persistence and fast recovery under

wheel traffic plus the unsurpassed weed control of Roundup Ready® System. This combination unique to America's Alfalfa varieties increases the manure management options in a feedlot or dairy without compromising alfalfa yields.

Researchers at Universities of Wisconsin and Minnesota<sup>1</sup> have proven that applying manure to alfalfa can increase production, but

they also warn about increased weediness. Research has shown that weediness increases with either manure or fertilizer added to alfalfa, but it is most severe at high rates of manure. Some experiments also have shown enhanced weed growth during the seeding year with added manure or N-containing fertilizer on alfalfa.

Added weed seeds and stimulation of weed growth increases the

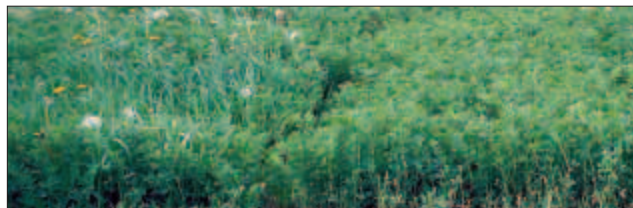


Herd Co Feedlot and Farm in Bartlett, Nebraska.

weed pressure in alfalfa, but higher yields were harvested at all research locations where preplant manure was applied. This research concludes that preplant manure applications have a positive effect on seedling-year alfalfa production where weeds are adequately controlled. The researchers predict that the yield response may also occur in full production years.

## THE NEW MANAGEMENT TOOL

The AmeriStand 405T RR alfalfa offers the combination of Traffic Tested® alfalfa that is patented for manure tolerance with the Roundup herbicide tolerance needed for effective weed control. Farmers and ranchers now have options for their weed control and nutrient management plans that can use a valuable asset, manure.



Conventional Weed Control

Roundup Ready® System



**Grow the Feed,  
Not the Weeds.™**

America's Alfalfa has been awarded U.S. Patent No. 6,887,382 for manure tolerance in alfalfa. Professor and Extension Soil Scientist, K.A. Kelling, Dept. of Soil Science, Univ. of Wisconsin-Madison and M.A. Schmitt, Associate Professor and Extension Soil Scientist, Dept. of Soil, Water and Climate, Univ. of Minnesota-St. Paul, respectively.

## Alfalfa offers a manure disposal solution

New research suggests that alfalfa may offer the most economical and environmentally beneficial solution for disposal of manure from livestock operations.

Extension forage agronomists say few crops are better suited for manure application than alfalfa. Not only does this perennial crop take up more nutrients than annual, short-season crops, but it also produces deep roots reaching 4 to 15 feet that can access nitrates and nutrients that might otherwise leach into groundwater.

Research studies show that an alfalfa stand with an average yield of 6 tons per acre per year can remove 336 pounds of nitrogen, 90 pounds of phosphate and 300 pounds of potash per acre per year. As the crop yield potential increases, so does its ability to take up nutrients. And while alfalfa is a legume that can convert atmospheric nitrogen into available nitrogen, it will show a preference for taking up free nitrogen from the soil before fixing nitrogen from the air. Unlike row crop fields, alfalfa allows producers to make midseason manure applications following each cutting.

# Guidelines for applying manure on your alfalfa stand

## Develop a manure disposal plan

- Conduct soil tests to determine the nutrient requirements of your field. Soil tests can help you determine how much manure your soils can accept without creating surface runoff or leaching problems.
- Comply with your state nutrient or manure management regulations governing the volume of manure nutrients that may be applied to cropland.
- Select a manure tolerant and Traffic Tested alfalfa variety. USDA-ARS manure tolerance studies show that AmeriStand 403T delivers a 14 percent average yield increase and 18 percent improved stand persistence, compared to five widely planted conventional varieties.



## Manage each manure application

- Make midseason applications as soon as possible after the cutting is removed from the field. Applying manure within three to five days after cutting will reduce the risk of salt burn and forage palatability problems.
- Manage the solid content of beef or dairy manure. Smothering the plants, especially the crown and axillary buds, with manure solids can reduce stand persistence. Surface-applying dairy manure with less than 8 percent solids content is generally safe.
- Minimize manure application on steeply sloping fields subject to surface runoff.
- Spread manure only when soils are firm to reduce soil compaction, prevent field rutting and minimize traffic damage to plant crowns.
- Diluting manure can help minimize scorching and burning alfalfa plants during hot, dry summer months.
- Avoid manure application immediately following the last harvest of the season. When plants enter dormancy, their ability to take up manure nutrients falls off quickly, increasing the risk of runoff and leaching.

Contact your local supplier or Call America's Alfalfa Customer Service at 800-873-2532 or visit our website at [www.americasalfalfa.com](http://www.americasalfalfa.com).