

# Stamina® Fungicide Seed Treatment

## Seed Treatment for Alfalfa

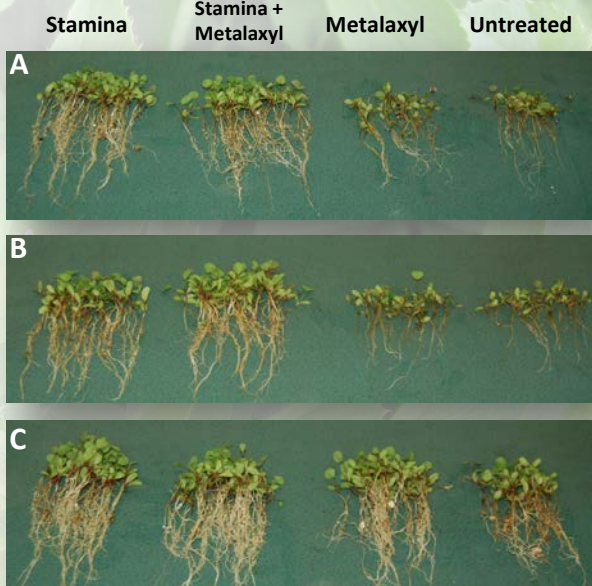
### Technical Information Bulletin



- **Stamina** protects Alfalfa from important seedling diseases
- Powered by **F500®** fungicide, the same active ingredient that is in **Headline®** fungicide
- Use rate: 1.5 – 3.1 fl oz/100 lb seed

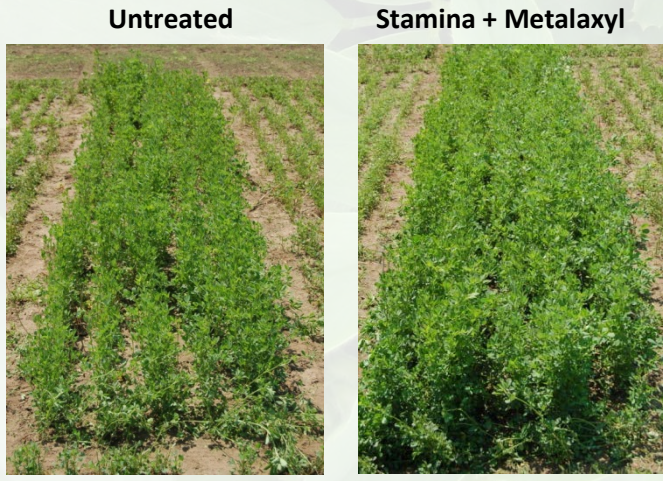
**Target Diseases**

- *Aphanomyces euteiches*
- *Rhizoctonia solani*
- *Fusarium* spp.
- *Phytophthora medicaginis*



2011 Laboratory test conducted by an independent third party researcher. Seedlings inoculated with (A) *Aphanomyces euteiches* Race 1, (B) *Aphanomyces euteiches* Race 2 (C) *Phytophthora medicaginis*. Stamina applied at 3.1 fl oz/cwt & metalaxyl applied at 0.91 fl oz/cwt.

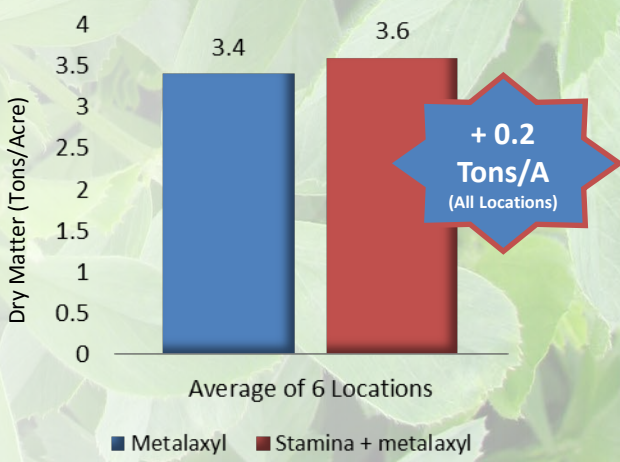
### A Healthier Stand from Seed Treated with Stamina



2011 field tests conducted by independent third party researcher in West Salem, WI. Alfalfa spring seeded May 6, 2011. Photos taken on June 29, 2011. 54 Days After Seeding. Stamina 3.1 fl oz/cwt, metalaxyl 0.91 fl oz/cwt.

### Increased Forage Yield from Seed treated with Stamina

#### Summary of Alfalfa Forage Yield, Seeding Year Data Across Midwest Locations



2011 replicated trials conducted by an independent third party researcher. Stamina applied at 3.1 fl oz/cwt. Metalaxyl applied at 0.91 fl oz/cwt.

**Always read and follow label directions**